



Conference Guide

Georgia FCCLA

2024 Fall Leadership Conference

The Georgia FFA-FCCLA Center in Covington, Georgia

Table of Contents

Fall Leadership Conference At-A-Glance.....	3
Description	3
Date & Location.....	3
Registration Dates & Deadlines	3
Who Can Attend	3
Attendee Information Needed to Register	3
Required Forms.....	3
Cost.....	4
Chaperone Ratio	5
Late Registration Policy.....	5
Registration Refunds.....	5
Payments	5
Payment Postmark Deadline	5
Payment Options	5
Checklist to Prepare for Fall Leadership Conference.....	6
Fall Leadership Conference Dates & Deadlines	7
Event Registration	8
Lodging / Overnight Accommodations.....	8
Registration Refunds:	9
Georgia FCCLA Dress Code	10
Georgia FCCLA Code of Conduct	11
Georgia FFA-FCCLA Center & Camp John Hope.....	12
Camp Policies	12
Fall Leadership Conference Tentative Agenda.....	13
Parking.....	14
Team Building Tactics Training.....	14
Opening Session	14
Leadership Sessions	14
Closing and Awards Session.....	14
State Community Service Project for Fall Leadership Conference	15
Adviser Volunteer Opportunities	17
Fall Leadership Conference Competitive Events	18
National Anthem Contest.....	18
Appendix A – Georgia FFA-FCCLA Center Map	19

Fall Leadership Conference At-A-Glance

Description

While attending the Georgia FCCLA Fall Leadership Conference, students will have the opportunity to expand their leadership potential and develop skills for life planning, goal setting, problem solving, decision making, and interpersonal communication in the workforce. Activities at the conference will include personal and professional development workshops, competitive events, and motivational general sessions.

Date & Location

The Georgia FFA-FCCLA Center

720 FFA FHA Road
Covington, GA 30014

Two Day Option – November 12th-13th

One Day Option #1 – November 13th

One Day Option #2 – November 14th

Registration Dates & Deadlines

Early Bird Registration: October 10th, 2024

Regular Registration: October 17th, 2024

Fall Leadership Conference at The Georgia FFA-FCCLA Center has a max. capacity limits.

Two Day Option – 450 attendees

**** NOTE : Chapters will have a maximum limit of 12 students per registration for the Two-Day Option ****

One Day Options #1 – 670 attendees

One Day Option #2 – 1100 attendees

Who Can Attend

All affiliated, paid FCCLA chapter members are eligible to attend the Fall Leadership Conference. Chapter Advisers, Parents, Alumni, Local Administrators, Teacher Educators, and others are eligible to attend. Every person attending the Fall Leadership Conference MUST be registered, paid and have a name badge to enter any session, workshop, and/or meal.

Attendee Information Needed to Register

- Student Name
- Gender
- T-shirt Size
- Competitive Events
- Special Needs

Required Forms

- Multiple Release Form – Complete one (1) form per chapter member attending
- Camp Medical Form – Complete one (1) form per chapter member attending
- Adviser Responsibility Form – One (1) per chapter

Cost

	Registration Type	Early Bird	Regular	Late
	Deadline Date	October 10 th	October 17 th	After October 17 th
Two-Day Package Registration Students, Advisers and Chaperones <ul style="list-style-type: none"> Admission to Sessions, Workshops and Conference Materials FLC T-shirt, Team Building Tactics Training Foundation Event / Recreation Time Overnight Lodging Day #1 Dinner Day #2 Breakfast Day #2 Lunch NOTE: Conference T-shirts XXL-4XL will incur additional \$2.00 charge per shirt		\$85	\$95	Not Available
Two-Day Package Registration for Bus Driver <ul style="list-style-type: none"> Day #1 Overnight Lodging – Semi-Private (Hotel Style) Day #1 Dinner Day #2 Breakfast Day #2 Lunch 		\$70	\$70	Not Available
Two-Day Package Registration for Male Chaperone <ul style="list-style-type: none"> Day #1 Overnight Lodging – Bunk Style Day #1 Dinner Day #2 Breakfast Day #2 Lunch 		FREE	FREE	Not Available
One-Day Basic Registration Students, Advisers, & Chaperones <ul style="list-style-type: none"> Admission to Sessions, Workshops and Conference Materials FLC T-shirt Lunch NOTE: Conference T-shirts XXL-4XL will incur additional \$2.00 charge per shirt		\$50	\$60	\$80
Add-On: Overnight Activities Students, Advisers and Chaperones <ul style="list-style-type: none"> Team Building Tactics Training Foundation Event / Recreation Time Day #1 Dinner Available for chapters attending the One-Day Option on Wednesday, November 13 th .		\$20	\$20	\$20
One-Day Basic Registration for Bus Driver <ul style="list-style-type: none"> Lunch 		\$12	\$12	\$12
Competitive Events per chapter member <ul style="list-style-type: none"> Statesman or Distinguished Statesman Exam Knowledge Bowl Membership Recruitment Display Lapel Pin Design Fashion Stylist Competition Cupcake Decorating Competition Pen It. Print It. Present It. Competition Preserve and Serve Competition Resist Dye Competition Say Yes to FCS Competition 		\$10	\$10	\$10
Would like additional FLC T-shirts to take back to your chapter? Contact Caitlin Roberson at croberson@gafccla.com				
Registration Deadlines are at 11:59 PM on the Deadline Date				

Chaperone Ratio

From the Georgia FCCLA Policies and Procedures Manual. XIII. Meetings - E. Conference Chaperone Policy

“When attending Georgia FCCLA conferences and events, advisers are expected to provide adequate supervision for his/her students. All chaperones must follow the Georgia FCCLA Dress Code and Code of Conduct as outlined in this manual. Chaperones are expected to attend all workshops or meetings with the members and advisers.

FCCLA Chapters must follow the following chaperone policy:

- *Day Trips: 1 adult for every 10 members*
- *Overnight Trips: 1 adult for every 4 members*
 - *You must have a male chaperone for male students.*

In the event that your county has a different chaperone policy than the one outlined above, your county’s policy should be followed.”

Late Registration Policy

From the Georgia FCCLA Policies and Procedures Manual. XIII. Meetings – D. Conference Registration Policies

Late Registration Policies

- *To register late, email Caitlin Roberson at croberson@gafccla.com*
- *Late Registrations will be allowed for 48 hours after the posted Regular Registration Deadline – for basic registrations only.*
- *No late registrations will be allowed for overnight packages.*
- *After 48 hours, no late registrations will be accepted.*
- *T-shirts are **NOT** guaranteed for late registrations.*
- *There are **NO** on-site registrations.*

Registration Refunds

No registration refunds will be processed after the regular registration deadline, October 17th, 2024

Payments

Payment Postmark Deadline

October 24th, 2024

Payment Options

By Check:

Checks should be made out to “Georgia FCCLA” and mailed to:

P.O. Box 840
Bogart, GA 30622

By Credit Card:

Credit Card payments are available upon request.

- Email Caitlin Roberson at croberson@gafccla.com if you need to pay with a credit card.
- Partial payments will not be accepted via credit card.
- A 3% credit card processing fee will be added to all credit card invoices.
- Georgia FCCLA used QuickBooks Online Invoices for credit card payments.

Checklist to Prepare for Fall Leadership Conference

- ❑ Set chapter deadlines for registration and payment
- ❑ Determine student cost to attend with your chapter, including registration fees, meals, travel, etc.
- ❑ Provide students with necessary conference information, including cost and competitions
- ❑ Send a letter to parents with event details
- ❑ Discuss dress code requirements with students
- ❑ Collect student payment before registration deadline
- ❑ Register all students, advisers, chaperones for the conference by the deadline
- ❑ Print emailed invoice and check/double check for accuracy
- ❑ Submit invoice to bookkeeper for payment
- ❑ Mail conference payment to Georgia FCCLA
- ❑ Follow the deadline checklist for all forms and submissions
- ❑ Review Fall Leadership Conference tentative agenda with attending members
- ❑ Ensure students are in proper dress attire before departure
- ❑ Ensure all Multiple Release Forms and Camp Permission Forms are properly completed, bring copies with you to Fall Leadership Conference in a large envelope with certification form (APPENDIX B) on the outside
- ❑ Have all attendees follow and like Georgia FCCLA on social media sites to receive conference updates and emergency information during the conference

Fall Leadership Conference Dates & Deadlines

Date	Action or Deadline
Thursday, October 10 th	Early Bird Registration Deadline
Thursday, October 17 th	Regular Registration Deadline
Thursday, October 17 th	Competitive Events Registration Deadline
Thursday, October 17 th	National Anthem Contest Submission Deadline
Saturday, October 19 th	Registration Substitution Deadline
Saturday, October 19 th	Late Registration Deadline
Wednesday, October 23 rd	Knowledge Bowl Phase #1 Online Logins – Emailed to Advisers
October 28 th – November 1 st	Knowledge Bowl Phase #1 Testing Window – 8 AM to 8 PM each day
Friday, October 25 th	Payment Postmark Deadline
Friday, October 25 th	Deadline to Submit Fashion Stylist
Friday, October 25 th	Deadline to Submit Pen It. Print It. Present It.
Friday, October 25 th	Deadline to Submit the Resist Dye Challenge
Friday, October 25 th	Deadline to Submit the Say Yes to FCS
Friday, October 25 th	Competition Substitution Deadline
November 4 th	Knowledge Bowl – Top 16 Teams are announced
November 5 th – 7 th	Knowledge Bowl – Middle School – Online Team Interviews Knowledge Bowl – High School – Online Team Interviews
November 4 th – 8 th	Statesman Exam Testing Window – 8 AM to 8 PM each day
Friday, November 8 th	Online Form Submission Deadline
Friday, November 8 th	Knowledge Bowl Top 8 Teams Announcement
Tuesday, November 11 th	FAST PASS Registration Badges sent to Advisers who submitted forms
November 12 th & 13 th	Two-Day Option - Fall Leadership Conference
Wednesday, November 13 th	One-Day Option #1 – Fall Leadership Conference
Thursday, November 14 th	One-Day Option #2 – Fall Leadership Conference

Event Registration

Registration Link (Will be updated on Monday, September 18th)

[Registration Link for Two Day Option for November 12th & 13th \(Max Capacity 450\)](#)

[Registration Link for One-Day Option #1 – November 13th \(Max Capacity 670\)](#)

[Registration Link for One-Day Option #2 – November 14th \(Max Capacity 1100\)](#)

Special Accommodations/Meals

Deadline: Registration Deadline

For members that require special accommodations, complete the special needs portion in the registration system. Example reasons that students may need special accommodations would include wheelchair access or interpreter services or **food allergies**. If your student does not have any special accommodations or dietary restrictions, you do not need to fill in the Special Needs section in the registration system.

Lodging / Overnight Accommodations

Deadline: Registration Deadline

- Chapter Advisers & chapter members purchasing the 2-Day Registration will need to register using the Two-Day Option Registration Link
- Cabin Assignments will be sent to the chapter advisers via email prior to their arrival.
- Chapters will be able to drop off their luggage and personal items to the cabin prior to Registration.
- Cabins are bunk style. Adviser rooms have bunk beds as well and will be assigned at max capacity, if needed.
- Multiple schools may be assigned to the same cabin.
- If you are bringing male student(s), you will need to bring a male chaperone or confirm chaperoning responsibilities with another chapter's adviser.
- Linens will NOT be provided. **Pack twin sheets, blanket or sleeping bag, pillow and towels.**
- Two-Day Package Registration & Housing Reservations will have max. capacity at the above quantities.

Packing List for Chapters Overnight Lodging

- Twin Ben Linens (Fitted) and Blankets or Sleeping Bag + Pillow(s)
- Toiletries [toothbrush, toothpaste, deodorant, hairstyling products, shampoo/conditioner/soap] and Towels (and shower shoes, if needed) for Shower, Medications
- Pajamas, Undergarments, Attire for Fall Leadership Conference, Socks/Shoes

Registration Refunds:

No registration refunds will be processed after the regular registration deadline, Monday, October 16th, 2023.

If a Chapter has registered participants that are unable to attend our Fall Leadership Conference, chapter advisers are able to substitute their student members with another student member until Friday, October 20th. Please contact Caitlin Roberson at croberson@gafccla.com to submit a substitution request.

Required Forms

- Multiple Release Form – Complete one (1) form per chapter member attending
- Camp Medical Form – Complete one (1) form per chapter member attending
- Adviser Responsibility Form – One (1) per chapter

Camp Medical Forms MUST be submitted in advance. Students who do not have a completed Camp Medical Form will NOT be able to attend the Fall Leadership Conference.

Multiple Release Forms and Adviser Responsibility Forms can be scanned onsite at the registration table and returned to the adviser. However, the state office would prefer that Chapter Advisers submit their Multiple Release Forms and Adviser Responsibility Forms in advance using the Form Submission Link.

Georgia FCCLA Dress Code

FCCLA members are expected to display a professional image at all functions. Members should always be respectful to administrators, exhibitors, parents, advisers, and other members.

Chapter Advisers will ensure that students always look professional and in appropriate attire.

Chapter members in inappropriate clothes will be asked to change clothes before returning to a session, workshop, activity, etc.

Activity	Student Attire
Team Building Tactics Training	Athletic Attire (no short shorts), tennis shoes
Overnight Activities	<u>Preferred Attire:</u> Jeans/Khakis and FCCLA T-shirt <u>Acceptable Attire:</u> Longer-length casual shorts (no short shorts), neat jeans (no holes or tears), collared shirts, sweatshirts, appropriate T-shirts, and casual footwear. <i>Chapter T-shirts are encouraged.</i>
Conference Attire	<u>Preferred Attire:</u> Jeans/Khakis and Conference T-shirt <u>Acceptable Attire:</u> neat jeans (no holes or tears), collared shirts, appropriate T-shirts, and casual footwear. <i>(No shorts or Flip Flops)</i>

***** For Competitions: See specific competition guidelines for attire.*****

Advisers and Adult guests are encouraged to follow the dress code. Teacher attire is appropriate.

Inappropriate Attire

The following should not be worn to any FCCLA activity:

- Clothing and accessories which are sexually suggestive, which advertise drugs, alcohol or tobacco products or display profanity.
- See-through, tight fitting, spaghetti straps, strapless, extremely short, or low-cut blouses/tops/dresses/skirts. No Crop-Tops
- Pants or skirts that are worn below the hip bone; no undergarments may be showing.
- Spandex, leggings, stirrup pants, leotards, short shorts, cutoffs, or pajamas. If leggings are worn, shorts/skirt/dress must be an appropriate length over the leggings.
- Clothing which is stained, torn, or ripped.
- Bare feet

Georgia FCCLA Code of Conduct

FCCLA members/advisers should follow the following guidelines while attending a Georgia FCCLA sponsored event:

1. Behavior should always be such that it reflects a positive, professional image of you, your chapter, your state and the organization.
2. Attendees shall keep their adult advisers always informed of their activities and whereabouts.
3. Local advisers will be responsible for their attendees' conduct.
4. Attendees will attend all general sessions, workshops, and activities.
5. Attendees will be prompt and prepared for all activities.
6. Identification badges will be worn at all times at our Fall Leadership Conference.
7. The dress code will be enforced at all times. (The Dress Code is listed in the Adviser Guide.)
8. Any accidents, injuries or illnesses should be reported to the adult chaperone or state adviser immediately.
9. All attendees will observe the curfew set by the State Office.
10. Inappropriate physical conduct is not allowed and will be subject to disciplinary action.
11. No student shall leave the camp facility unless accompanied by his/her adviser or chaperone.
12. If a student is found responsible for stealing or vandalism, the student and his/her parents/guardians will be expected to pay all damages.
13. Attendees attending FCCLA events may not purchase, possess, consume or be under the influence of alcohol or illegal drugs at any time. Violators will be subject to disciplinary action.
14. Smoking, vaping, or the possession of tobacco, is not allowed.
15. Attendees violating or ignoring any of the conduct rules will subject their entire chapter delegation to being unseated and their competitive events contestants (if applicable) being disqualified. Individual Attendees who disregard the rules will be subject to disciplinary action and be sent home at their own expense. In the case of student Attendees, parents/guardians will be notified.

Georgia FFA-FCCLA Center & Camp John Hope

Camp Policies

This event is a school event, so school policies apply.

If there is a discrepancy between school policies and camp policies, the strictest rule will apply.

1. Campers must participate in the camp program, display a positive attitude in all events, and conduct themselves appropriately at all times.
2. Students must show respect to all campers, advisors, and staff. Students will follow instructions from **any** advisors, adult supervisors, and camp staff.
3. Campers may not use cell phones during camp programs and activities.
4. Campers must follow the dress code.
5. Campers **MAY NOT enter cabins of the opposite sex, nor may they be in any other cabin besides the one their school is assigned.** This rule applies for the entire week, including check-in and check-out.
6. Campers may not enter any other cabins or buildings that they are not assigned to.
7. Campers must remain in their assigned cabin after curfew.
8. The Center strongly recommends that students do not bring valuable items to camp. If a camper chooses to bring valuable items such as iPads and cell phones, the Georgia FFA-FCCLA Center is not responsible for lost, damaged, or stolen items.
9. Language or behavior that is obscene, violent, or racially or sexually inappropriate is prohibited.
10. Use of tobacco products, alcohol and/or drugs is prohibited.
11. Firearms, weapons, pocket knives and/or firecrackers are prohibited.
12. Skateboards, scooters, and roller blades are prohibited.
13. Graffiti or destructive use of items such as water balloons, shaving cream, and toilet paper is prohibited.

Discipline and Dismissal Policy

Failure to follow camp policies will result in these steps:

1. Student will call parent/guardian and report conduct not in compliance with these guidelines.
2. At the Director's discretion, this may result in parent/guardian arranging transportation home.
3. At the student's local school administration's discretion, disciplinary action may be taken by the student's school.
4. Chapter will be billed for damages caused by graffiti or other destructive acts.

In addition, failure to follow no-tolerance policies, including but not limited to use of violence or possession of weapons, use of alcohol or drugs, entering the cabin of the opposite sex, being outside the cabin after curfew, or harassment of another camper or staff, may result in the following steps:

1. Student removed from the facilities
2. Law enforcement contacted
3. A letter sent to school administrator (who may pursue additional disciplinary action)
4. Student suspended from all activities at FFA-FCCLA Centers for up to 18 months

Thank you for your cooperation in following these camp policies.

Fall Leadership Conference Tentative Agenda

Tuesday, November 12th (If choosing the Two-Day Option)

2:00 PM – 6:00 PM	Conference Check-In and Registration Packet Pick-Up
2:30 PM – 5:30 PM	Team Building Tactics Training [<i>included in 2-Day Package Registration</i>]
3:00 PM – 6:00 PM	Statesman and Distinguished Statesman Exam Testing *Pre-Registration Required* Testing Begins at 3:00 PM, 4:00 PM and 5:00 PM
6:00 PM – 7:00 PM	Dinner
7:15 PM – 8:15 PM	Foundation Event / Special Event
8:15 PM – 9:45 PM	Recreation Time [<i>included in 2-Day Package Registration</i>]
10:00 PM	Curfew

Wednesday, November 13th and Thursday, November 14th

7:45 AM – 8:45 AM	Breakfast [<i>included in 2-Day Package Registration</i>]
8:00 AM – 9:00 AM	Check Out of Cabins
8:00 AM – 9:00 AM	Conference Check-In and Registration Packet Pick-Up
8:00 AM – 10:00 AM	Membership Recruitment Display Set-Up
8:00 AM – 1:30 PM	Lapel Pin Design Voting Open
9:00 AM – 10:00 AM	Opening General Session
10:15 AM – 10:45 AM	Leadership Session #1
10:15 AM – 10:45 AM	Cupcake Decorating Competition – Middle School
11:00 AM – 11:30 AM	Leadership Session #2
11:00 AM – 11:30 AM	Cupcake Decorating Competition – High School
10:30 AM – 2:45 PM	Knowledge Bowl Team Interviews (November 13 th Only)
11:45 AM – 12:15 PM	Lunch – Group A
12:15 PM – 12:45 PM	Lunch – Group B
12:45 PM – 1:15 PM	Lunch – Group C
1:30 PM – 2:00 PM	Leadership Session #3
2:15 PM – 2:45 PM	Leadership Session #4
3:00 PM – 3:30 PM	Closing and Award Session

Parking

Driving Directions for the Georgia FFA-FCCLA Center in Covington, GA [LINK](#)

Designated Parking is limited; however, there is plenty of bus parking around the campgrounds.

Please make sure that you or your bus driver does not block any roadways.

Team Building Tactics Training

Chapters can participate in our Team Building Tactics Training led by our State Executive Council.

This training is only available to chapters who have purchased the **Two-Day Package Registration**.

There are 3 time slots available on a first come, first serve basis for the first 150 people per time slot through the registration system.

- 2:30 – 3:15 PM
- 3:30 – 4:15 PM
- 4:30 – 5:15 PM

Students must be dressed in athletic attire and tennis shoes – no flip flops are allowed. It is also suggested that students bring a water bottle with them when they participate.

The State Office will host a Hydration Station at the ball field, where the Team Building Tactics event will take place. Attendees can purchase a water bottle for \$2 and customize their drink with a variety of flavors and edible glitter. All proceeds from the Hydration Station will support the Camp Fund, benefiting the Georgia FFA-FCCLA Center.

Opening Session

During this session, we will be featuring our State Executive Council and Region Officer Teams. We will be taking part in the Opening Ceremony, announce important Georgia FCCLA initiatives and events, provide a preview of the day's events, and hear from a keynote speaker.

Leadership Sessions

Various Leadership Sessions and workshops will be provided at the Fall Leadership Conference. Sessions may include, but not limited to membership, chapter activities, State and National Programs, FCCLA Week, Competitive Events, etc.

Members have the opportunity to choose their leadership sessions. Once a workshop is full, students will need to choose another workshop to attend.

Members must attend the Leadership Sessions and Workshops at the assigned times. Students are not allowed to be in the common areas unsupervised. **It is the responsibility of the chapter adviser to ensure that all students are attending leadership sessions throughout the day.**

Closing and Awards Session

During this session, we will be announcing the Statesman and Distinguished Statesman Awards and Top 3 competitors for our Fall Leadership Conference competitions. All Participants in these competitions will have reserved seating to the left or right of the stage.

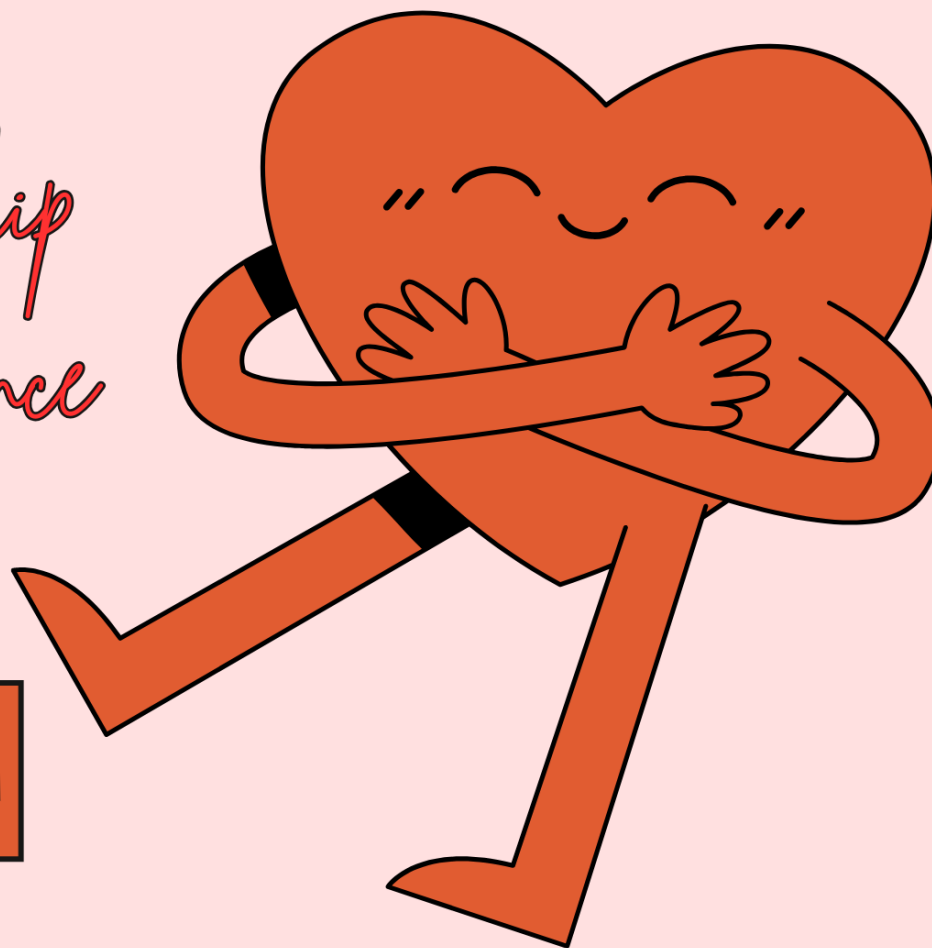


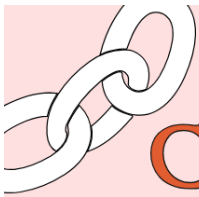
Chain Reaction

Join us in creating a chain of students committed to being heart strong at the Fall Leadership Conference. For \$1 a band, students can create a link for the chain reaction across camp during registration.

*24' Fall
Leadership
Conference*

**\$1
DONATION**





Chain Reaction Directions

Why:

Over this past year, Emma Pitman's dad suffered from a traumatic aortic dissection that was life-threatening. He spent 14 days in the cardiac intensive ICU. This experience taught her the importance of keeping our hearts and bodies healthy. Heart-related medical issues affect close to 695,000 people in the United States every year. We are wanting go red for this year to support the people affected by heart conditions.

When:

YOU HAVE TWO OPTIONS:

During Online Registration

- Look for the add-on to pre-purchase chain links for your chapter attendees.
- Pre-ordering will allow you to have your chain links included in your registration packet.

During Fall Leadership Conference

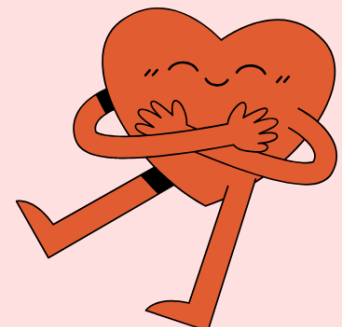
- Look for the table set up in the Terry England Leadership Center during registration and check-in.
- Advisers and students can purchase chain links on-site for \$1 each.
- Cash and cards will be accepted.

How:

The Chain Reaction links will be put on display at FLC.

Everyone will visit the Chain Reaction table at registration to write on your chain links. Once you write on the links, you will hang them on the display. Writing suggestions will be displayed at the station and include writing the name of a loved one affected by heart conditions or a personal commitment to heart health. Pens and markers will be available for everyone to use to write on the links.

**\$1
DONATION**



Adviser Volunteer Opportunities

Advisers and Chaperones are needed to ensure that chapter members attending have the best conference yet!

Volunteer opportunities can count for “Assuming Responsibility” for your Honor Roll documentation.

Here is a list of volunteer opportunities:

Volunteer Type	Day / Time
Dinner Chaperone / Door Monitor	November 12 th
Foundation Event / Recreation Time Chaperone	November 12 th
FCCLA Store Manager	November 12 th -14 th
Breakfast Chaperone / Door Monitor	November 13 th
Lunch Chaperone / Door Monitor	November 13 th & 14 th
Leadership Session Monitor for B&I and Partners	November 13 th & 14 th
Competitive Events Evaluator	November 13 th & 14 th

Advisers can sign up for Volunteer Opportunities via a Google Form created by the State Office.

If needed, one adult from each chapter will be assigned by the State Office a volunteer opportunity.

Fall Leadership Conference Competitive Events

List of Competitive Events

The following events are available at this year's Fall Leadership Conference.

- Statesman Exam
- Distinguished Statesman Exam
- Lapel Pin Design
- Membership Recruitment Display
- Knowledge Bowl – **Participants in Knowledge Bowl must attend FLC on 11/12**
- Fashion Stylist
- Pen It. Print It. Present It.
- Cupcake Decorating Competition
- Preserve and Serve
- Say Yes to FCS
- Resist Dye Challenge

[Quick Link to the 24-25 Georgia FCCLA Competitive Events Guide](#)

National Anthem Contest

Members, you have the chance to win the opportunity to sing the National Anthem at our Fall Leadership Conference. Participants will need to submit a video of them singing the National Anthem in order to be a contestant. National Anthem Singers must be registered to attend the Fall Leadership Conference. If chosen, Georgia FCCLA will credit your chapter's invoice for ½ of the One Day Basic Registration price (\$25) as a thank you for being a part of the Opening Session.

Submissions are due by Friday, October 13th, 2023.

Notification will be sent to the winner of the National Anthem Contest on Monday, October 16th, 2023.

Appendix A – Georgia FFA-FCCLA Center Map

